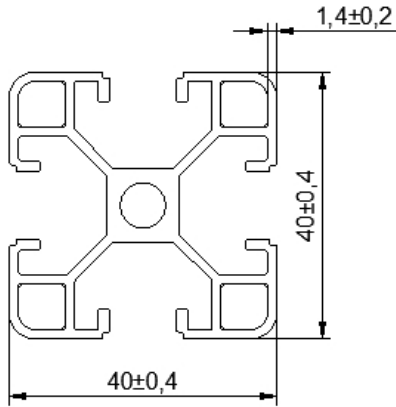


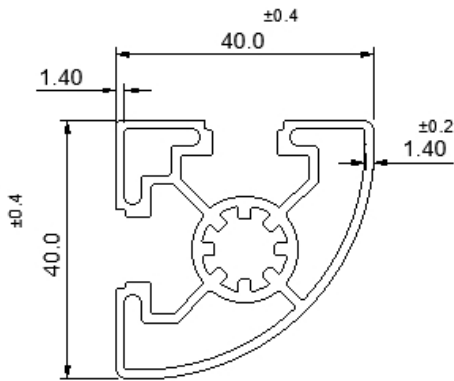
INDUSTRIAL PRODUCTS

DIE No: 60001



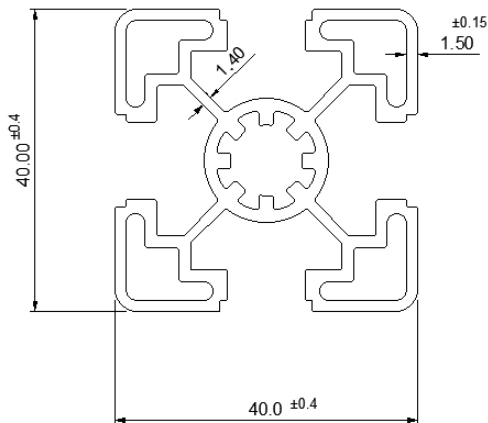
Wt. Range : 1.020-1.150 KG/MTR

DIE No: 60003



Wt. Range : 0.890-1.150 KG/MTR

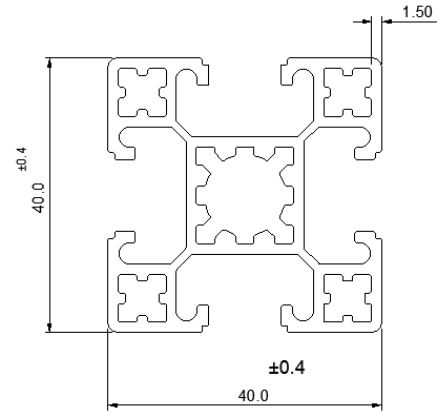
DIE No: 60005



Wt. Range : 1.100-1.390 KG/MTR

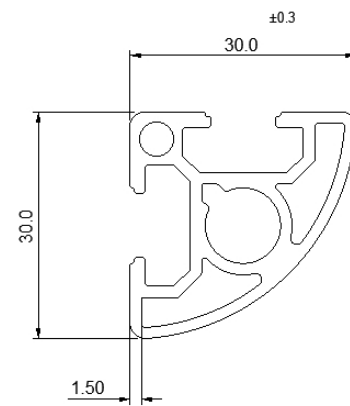
FENSING SECTIONS

DIE No: 60002



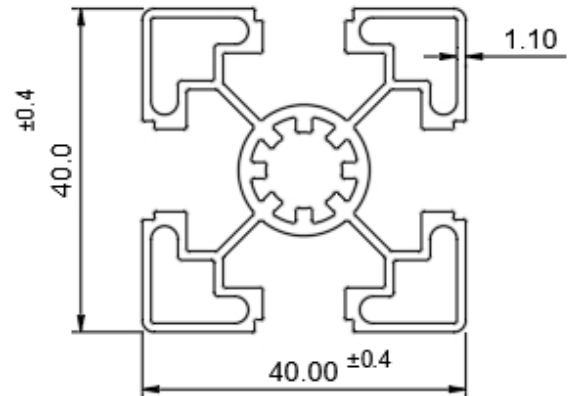
Wt. Range : 1.120-1.420 KG/MTR

DIE No: 60004



Wt. Range : 0.618-0.776 KG/MTR

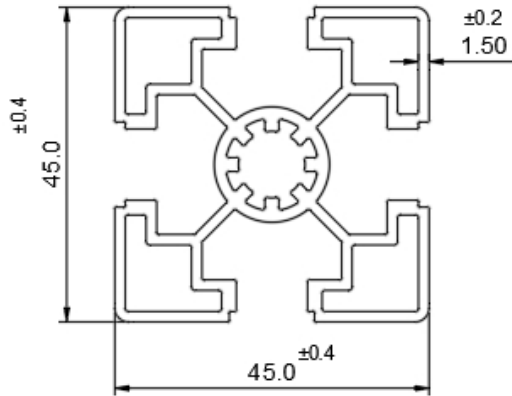
DIE No: 60006



Wt. Range : 0.870-1.190 KG/MTR

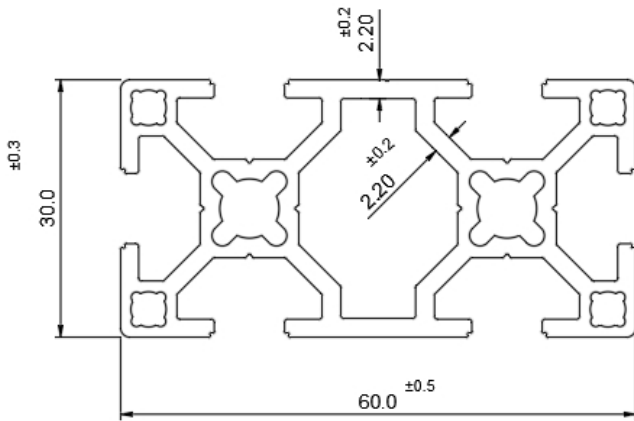
INDUSTRIAL PRODUCTS

DIE No: 60007



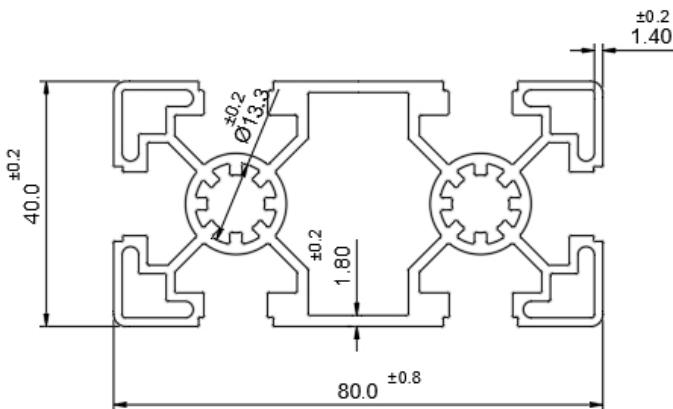
Wt. Range : 1.250-1.590 KG/MTR

DIE No: 60009



Wt. Range : 1.420-1.640 KG/MTR

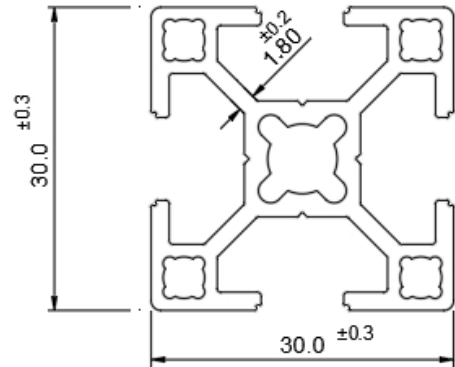
DIE No: 60011



Wt. Range : 1.980-2.470 KG/MTR

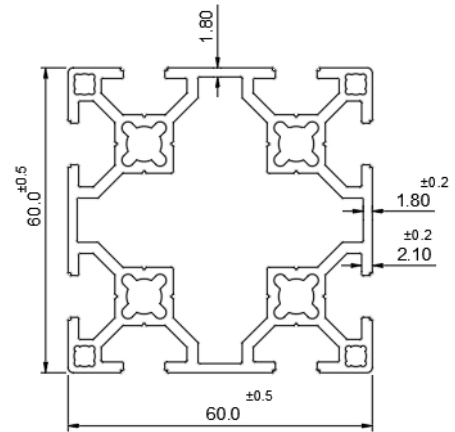
FENSING SECTIONS

DIE No: 60008



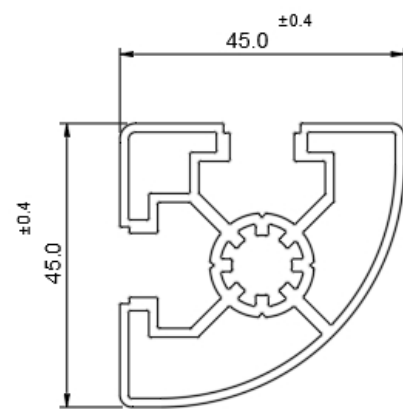
Wt. Range : 0.660-0.840 KG/MTR

DIE No: 60010



Wt. Range : 2.090-2.550 KG/MTR

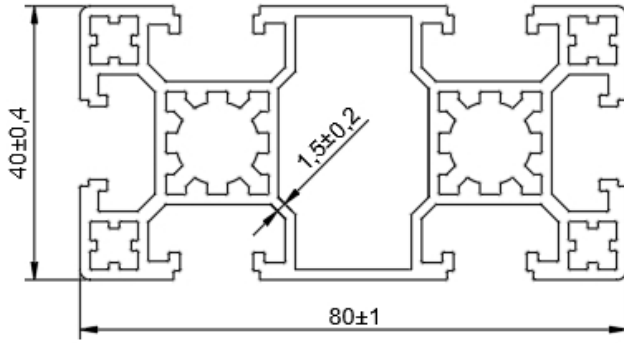
DIE No: 60012



Wt. Range : 1.040-1.320 KG/MTR

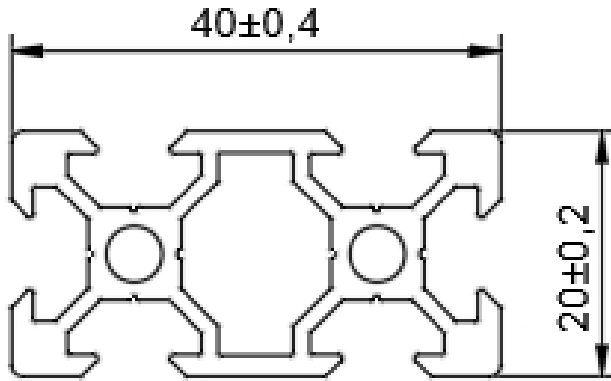
INDUSTRIAL PRODUCTS

DIE No: 60013



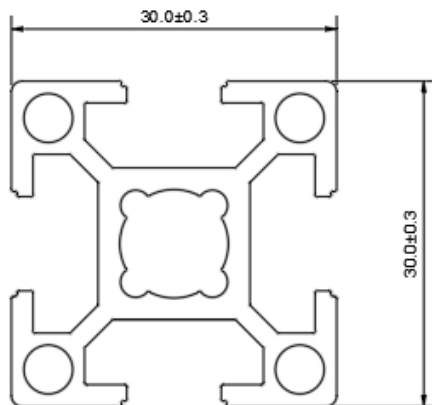
Wt. Range : 2.000-2.460 KG/MTR

DIE No: 60015



Wt. Range : 0.691-0.853 KG/MTR

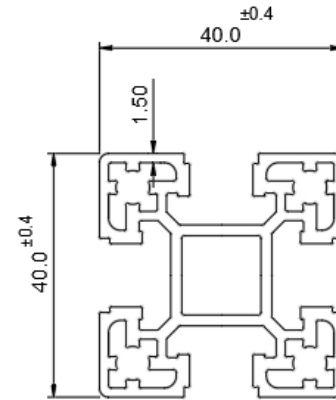
DIE No: 60017



Wt. Range : 0.723-0.899 KG/MTR

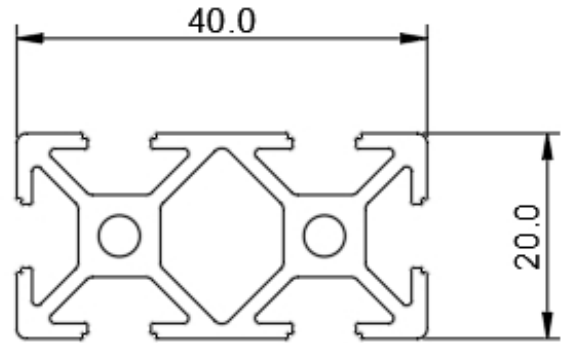
FENSING SECTIONS

DIE No: 60014



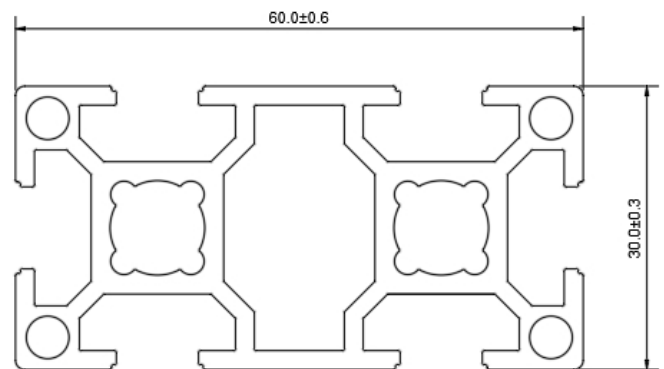
Wt. Range : 1.260-1.560 KG/MTR

DIE No: 60016



Wt. Range : 0.755-0.800 KG/MTR

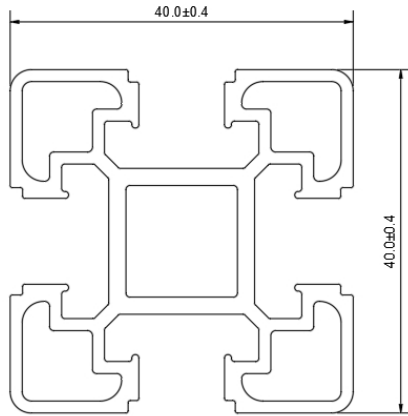
DIE No: 60018



Wt. Range : 1.340-1.630 KG/MTR

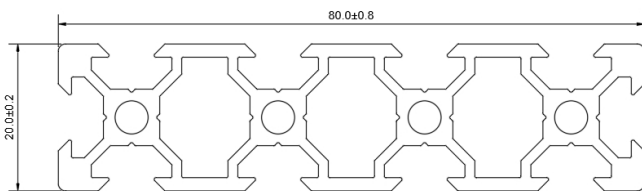
INDUSTRIAL PRODUCTS

DIE No: 60019



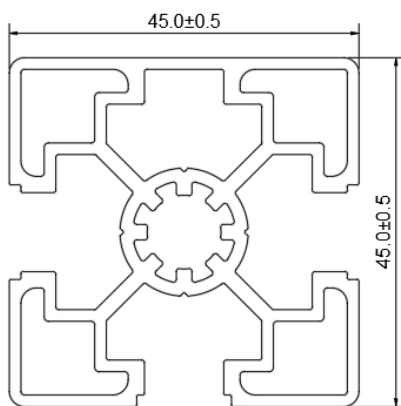
Wt. Range : 1.103-1.320 KG/MTR

DIE No: 60021



Wt. Range : 1.250-1.560 KG/MTR

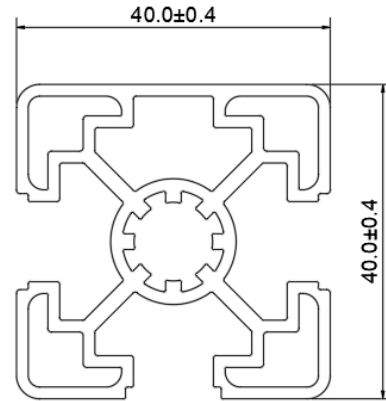
DIE No: 60023



Wt. Range : 1.350-1.690 KG/MTR

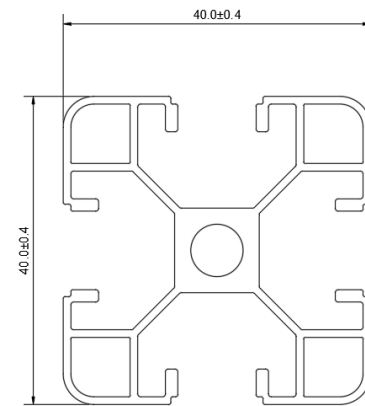
FENSING SECTIONS

DIE No: 60020



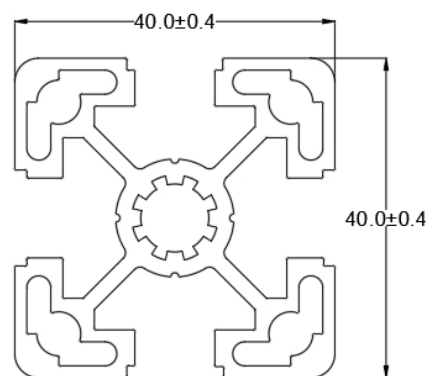
Wt. Range : 1.180-1.380 KG/MTR

DIE No: 60022



Wt. Range : 0.746-1.023 KG/MTR

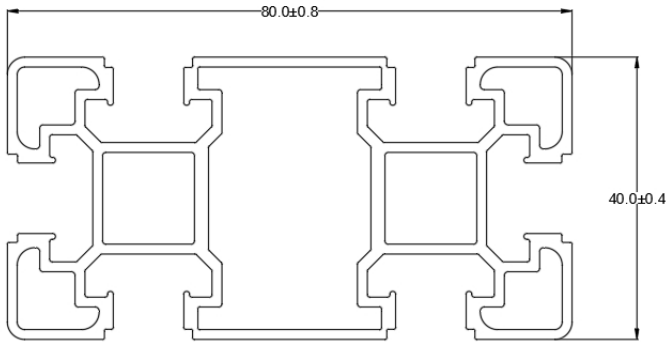
DIE No: 60024



Wt. Range : 1.320-1.590 KG/MTR

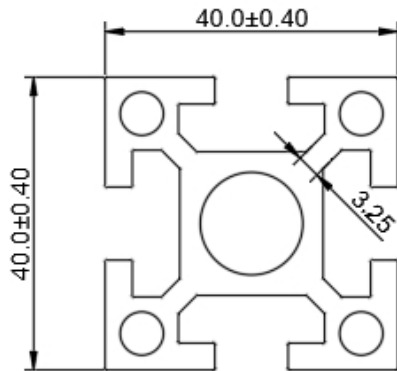
INDUSTRIAL PRODUCTS

DIE No: 60025



Wt. Range : 1.630-2.110 KG/MTR

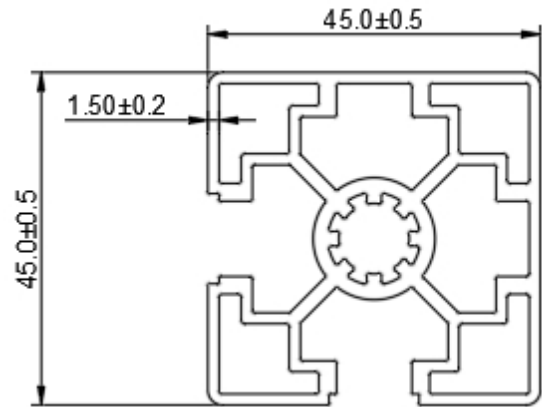
DIE No: 60027



Wt. Range : 1.750-1.990 KG/MTR

FENSING SECTIONS

DIE No: 60026



Wt. Range : 1.420-1.780 KG/MTR